

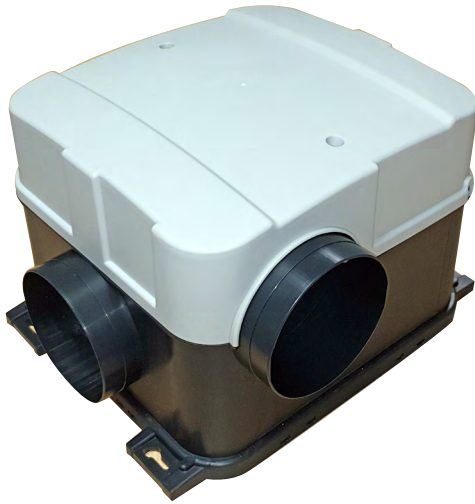


For use in dwellings with six wet rooms or fewer

The new CME3 Q Plus is ideal for continuous extract of stale, damp and polluted air to the outside environment.

The CME3 Q Plus is the latest addition to the centralised mechanical extract unit range. A combination of smooth lines makes it the ideal solution for hidden ceiling installation in flats and apartments

The unit has a very large duty range over 120 l/s (430m³/hr) at reasonable static pressure.



Features & Benefits

- High energy efficiency levels, via Electronically Commutated (EC) motor
- Very low power consumption/specific fan power
- Airflow up to 120 l/s (430 m³/h) at 100 Pa
- Compact – unit is small and low in profile, can be fitted in airing cupboards, cupboards or loft spaces
- Easy installation due to innovative sub-assembly and unique packaging design
- Optional adjustable humidity sensor (between 55% RH & 85% RH) increases unit's speed
- Low unit noise
- Fully adjustable boost overrun timer 0-30 minutes
- Can accept either Ø125 and/or Ø100
- Unit can be cleaned and serviced without disturbing ducting
- For use in conjunction with Titon trickle vents
- Available in volt free and switch live inputs
- Quick and easy commissioning
- Demand control ventilation ready
- Wide duty range
- Patented
- Can be mounted on any plane

Description

Titon CME3 Q Plus whole-house central mechanical extract ventilation unit.

Product Codes

Volt free switch inputs

TP332A CME 3 Q Plus (Full assembly).

TP332HA CME 3 Q Plus, humidity sensor (Full assembly).

Switch live inputs

TP334HA CME 3 Q Plus, humidity sensor (Full assembly).

Standards

Conforms to requirements of UK statutory Building Regulations and Technical Standards for Ventilation and BRE 398.

SAP Appendix Q tested

(<https://www.ncm-pcdb.org.uk/sap/pcdbsearch.jsp?pid=34>)

Exceeds requirements of Building Regulations Approved Document L (England & Wales).

EU RoHS Directive compliant.

Conforms to requirements of EC council directives relating to Electromagnetic Compatibility and Electrical Safety:

2006/95/EC (LVD), 2004/108/EC (EMC) EN 60335-1:2002/A2:2006, EN 60335-2-80:2003, A1:2004. CE Marked.

Other non-UK info available on request.

Specification

Dimensions (excluding ports):

310mm wide x 340mm long x 252mm high (excluding spigots)

Weight: 5 kg

Finish: Light grey / dark grey

Materials

Housing: Talc Filled Polypropylene

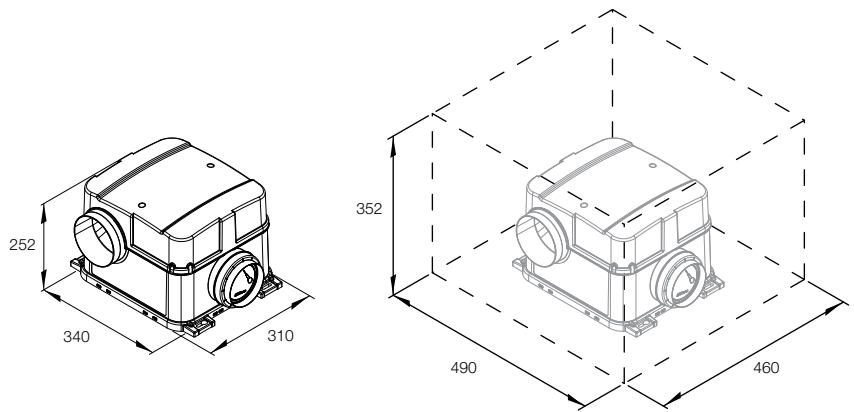
Guarantee period: 3 years (UK only)

Electrical: 230V ~ 50/60Hz, 3A fuse

Installation: Install in accordance with regulatory requirements, such as the Domestic Ventilation Compliance Guide (England & Wales) and the Residential Ventilation Association recommendations.

Maintenance: See product manual.

Drawing & Dimensions



Performance

The figures and compliance levels below relate to current SAP requirements. Revised SAP guidance will have an effect on performance and up-to-date figures can be found on the relevant product page at www.titon.com.

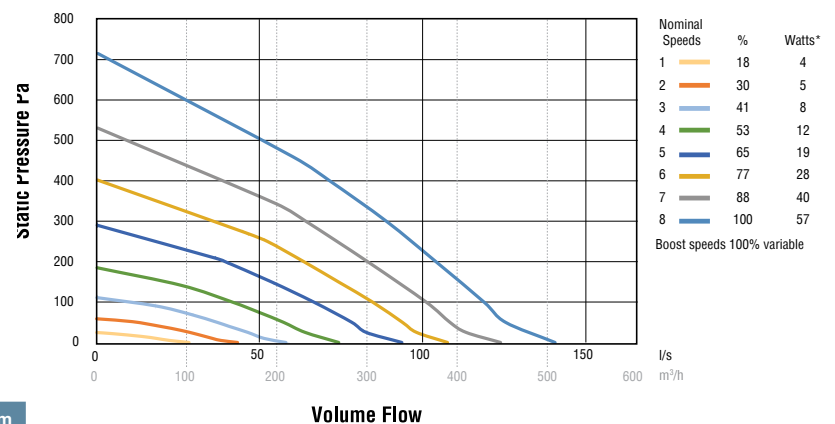
Exhaust terminal configuration*	Fan speed setting	Specific fan power (W/l/s)	Energy Saving Trust Best Practice Performance Compliant
Kitchen + 1 additional wet room	100% variable	0.18	Yes
Kitchen + 2 additional wet rooms	100% variable	0.16	Yes
Kitchen + 3 additional wet rooms	100% variable	0.17	Yes
Kitchen + 4 additional wet rooms	100% variable	0.19	Yes
Kitchen + 5 additional wet rooms	100% variable	0.21	Yes
Kitchen + 6 additional wet rooms	100% variable	0.25	Yes

Figures taken from the BRE Test Results apply for both the standard and humidity versions.

*Number of wet rooms is based on SAP Q test criteria and does not correlate directly with regulatory performance requirements.

Test results available for use with 100mm ducting.

Nominal fan performance



Acoustic Data

Product	Airflow l/s	% of Max flow	dB(A) @ 3m Hemispherical		dB(A) @ 3m Spherical
			Induct Inlet	Casing Breakout	Casing Breakout
CME3 Q Plus	42 l/s	41%	19	21	18
	69 l/s	65%	35	32	29
	104 l/s	100%	44	45	42